

FACTORS CAUSING RECIDIVISM IN CLASS IIA CURUP CORRECTIONAL INSTITUTION



¹Zhafran Al Farras, ²Mulyani Rahayu

^{1,2}Program Studi Manajemen Pemasyarakatan, Politeknik Pengayoman - Indonesia

e-mail:

¹zhafrancrp123@gmail.com (*corresponding author*)

²mrahayu.widayat@gmail.com

ABSTRACT

This study aims to identify the factors causing recidivism and to analyze the pattern of inmate development at the Class IIA Correctional Institution in Curup. Using a descriptive qualitative approach, data were collected through interviews, observations, and documentation involving recidivist inmates and correctional officers. The findings indicate that recidivism is influenced by both internal and external factors. Internal factors include weak self-control, low legal awareness, and continued attachment to negative environments. External factors involve economic pressure, social stigma, and the absence of an effective reintegration system after release. The institution implements development programs focused on personality and independence. However, these programs have not been fully optimal due to limited facilities and a shortage of qualified coaches. The analysis is supported by Life Course Theory and Growth Mindset Theory, which emphasize the importance of life turning points and the development of a growth-oriented mindset in preventing reoffending. The study concludes that more comprehensive and sustainable approaches are needed. It recommends the development of psychosocial-based coaching programs and stronger reintegration partnerships involving multiple stakeholders to effectively reduce recidivism and support long-term behavioral change among inmates.

Keywords: *Recidivism; Correctional; Prisoner Coaching*

INTRODUCTION

Correctional Institution is one of the vital institutions in the criminal justice system that has a strategic role in the development and rehabilitation of prisoners. The function of correctional institutions is no longer just a place to serve criminal sentences, but has shifted to become a coaching institution that prioritizes rehabilitative and reintegrative aspects. This is affirmed in Law Number 22 of 2022 concerning Corrections, which states that correctional institutions are institutions that carry out the function of fostering prisoners. The goal is to create individuals who are aware of the law, productive, and able to adapt back to the social environment after the punishment period ends. The development carried out in prisons covers various dimensions, including personality development and independence development. Personality development aims to shape the behavior of prisoners to have better moral, spiritual and ethical values, while independence development aims to improve the work skills and economic capacity of prisoners so that they have provisions when returning to society (Setianto et al., 2023). In modern corrections, the success of the prisoner development process is closely related to the decline in recidivism rates, which is the phenomenon of former prisoners returning to the criminal world after serving their sentences.

Recidivism itself is one of the serious challenges in the punishment system. According to Green (2024), around 70% of former prisoners in the United States return to prison within three years of release. In Indonesia, a similar phenomenon also occurs although the scale is different. Data from the Directorate General of Corrections (2023) shows fluctuations in the recidivism rate between 2019 and 2023. An increase of 0.7% was recorded in 2020, with an additional 1,250 recidivists, before finally decreasing from 16.32% to 12.90% in 2023. However, despite the decline, the phenomenon of recidivism remains a latent threat that indicates that the effectiveness of guidance in prisons has not been optimized. One of the interesting cases to be studied more deeply is the condition at the Class IIA Curup Correctional Institution, Bengkulu Province.

Table 1
Classification of Criminal Offenses of Class IIA Curup Correctional Institution

| Classification of Criminal Offenses | Type of WBP | Prisoners | | Total |
|-------------------------------------|--------------------|-----------|-------|-------|
| | Age Classification | Adults | Child | |
| Specialized Crimes | | 220 | 5 | 225 |
| General Criminal | | 337 | 1 | 495 |
| | Total | 557 | 1 | 720 |

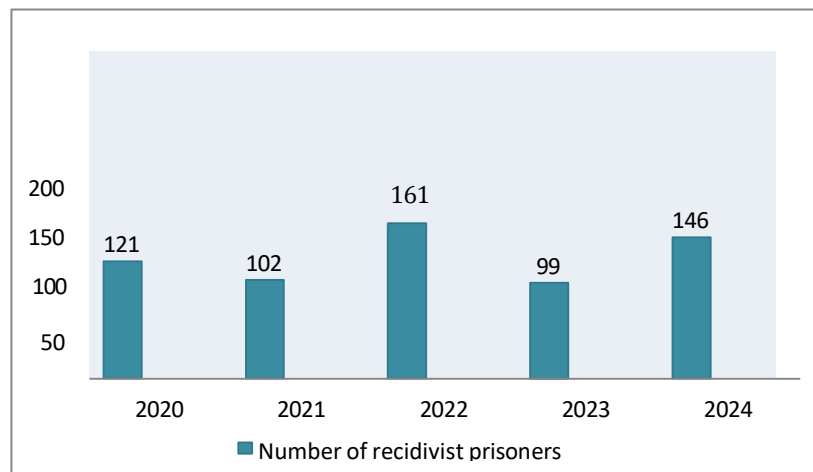
Based on data from the Correctional Database System (SDP) as of April 2025, the number of inmates in Curup Correctional Facility reached 720 people, far exceeding the ideal capacity of 250 people. Overcrowding or overcapacity is a major factor in the decline in the quality of coaching and rehabilitation services. In addition, Class IIA Curup Correctional Facility also recorded 236 recidivist prisoners, most of whom came from narcotics and theft cases. This high rate of recidivism indicates a fundamental problem in the implementation of coaching programs that are not fully able to change the behavior of prisoners in a sustainable manner. When reviewed further, the coaching carried out at Class IIA Curup Correctional Facility consists of personality development such as religious programs and physical development, as well as independence development such as sewing training, farming, and working in workshops. Unfortunately, in terms of implementation, the number of prisoners involved in coaching activities is still very

limited. Factors such as the lack of experts, limited facilities, and the absence of maximum support from the government are the main obstacles in the implementation of the coaching program. As a result, most prisoners follow the coaching program by themselves or without professional supervision.

The unsuccessful guidance not only affects the individual prisoner, but also has an impact on society at large. Prisoners who fail to reintegrate into society after being released from prison tend to re-offend. This reintegration failure is influenced by various factors, such as social and economic pressures, stigma from the community and family, and limited access to employment and education. Some ex-prisoners even consider that returning to prison is a solution to the uncertainty of life outside, reflecting the absence of social hope post-release.

Furthermore, from the perspective of legal sociology, the phenomenon of recidivism reflects the failure of the legal system in creating an effective deterrent effect. Criminal sentences imposed are often not accompanied by in-depth psychosocial recovery programs, so they are unable to change the cognitive and affective structure of the offender. Research by La Patuju & Afamery (2016) shows that a punishment system that only focuses on imposing sanctions without a systemic rehabilitative approach tends to increase the chances of recidivism. Therefore, efforts to reduce the recidivism rate are not sufficient only through strengthening positive laws, but must also be followed by reforms to the coaching system in prisons.

Table 2
Data on the Number of Prisoners Entered Recidivist Correctional



The conditions at Class IIA Curup Correctional Facility provide a concrete illustration of the complexity of the recidivism phenomenon. Based on data from 2024, there was an increase in the number of recidivist prisoners to 146 people after previously experiencing a decrease in 2023. This shows that despite various efforts such as the establishment of the Professional Certification Institute (LSP) and the Community Empowerment Program (POMKAS), the sustainability of post-release programs has not been fully integrated effectively. This indicates that the success of coaching inside prisons must be accompanied by a comprehensive reintegration strategy outside prison.

In terms of regulations, Indonesia actually has various regulations that support the rehabilitation of prisoners, including Law Number 22 of 2022 concerning Corrections

and Law Number 1 of 2023 concerning the new Criminal Code which adopts the concept of "Algemene Recidive", which is an aggravation of punishment against perpetrators of recidivism without distinguishing the type of crime. In addition, Government Regulation No. 31/1999 on the Guidance and Mentoring of Prisoners also provides a legal basis for the implementation of guidance, including the improvement of the intellectual, spiritual and skill qualities of prisoners.

However, despite the availability of various regulations and programs, their implementation in the field still experiences various obstacles. There needs to be an in-depth evaluation of the effectiveness of the current coaching program, especially in Curup Class IIA Prison. The evaluation can be carried out through an empirical approach by looking at the relationship between the effectiveness of the coaching program and the level of recidivism of prisoners. In addition, an understanding of the factors that cause recidivism is also important to formulate a more targeted coaching strategy.

Based on this description, this study aims to identify the factors that cause recidivism in Class IIA Curup Correctional Facility, as well as analyze the effectiveness of the coaching pattern applied. The approach used in this research involves the perspectives of criminology and social psychology in order to gain a comprehensive understanding of the behavior of recidivist prisoners. The results of this study are expected to be an input for the Directorate General of Corrections and the government in developing a more systemic, rehabilitation-oriented, and sustainable coaching strategy in an effort to reduce the recidivism rate in Indonesia.

LITERATURE REVIEW

Mahmuda and Fitriani (2024) emphasized that the recurrence of criminal acts after coaching in Solok Class IIB Correctional Facility is influenced by internal and external factors such as economic pressure, social stigma, and lack of emotional and social support. This study uses a qualitative approach with sociological and rehabilitation theories, which highlights the importance of post-coaching counseling services to support the reintegration process of ex-convicts into society. However, this effort still faces various structural obstacles, including limited counselor personnel, suboptimal mentoring policies, and a lack of institutional awareness of the importance of ongoing psychosocial support.

Life Course Theory

Life Course Theory was developed by Sampson and Laub (1993) as a theoretical framework that explains the dynamics of criminal behavior in an individual's life trajectory. This theory departs from the understanding that deviant behavior is not a fixed state, but is strongly influenced by various life transitions, social experiences, and turning points such as marriage, employment, education, or entry into the correctional system. The main components of this theory include onset, persistence, and desistance.

This theory emphasizes the importance of social ties as a controller of individual behavior. Strong social ties with family, educational institutions, and the workplace are believed to prevent a person from engaging in criminal acts. Conversely, weak social ties and negative environmental influences have the potential to encourage individuals to re-offend after release. This theory is used to understand how prisoners who have undergone a period of guidance still have a tendency to re-offend due to the absence of effective turning points in their post-release lives.

Furthermore, Life Course Theory is also relevant to the role of correctional institutions in creating positive turning points through coaching, skills training, and the

re-establishment of constructive social ties. However, if coaching does not touch fundamental aspects such as changes in mindset, social ties, and post-release economic support, then the desistance process is difficult to occur, and recidivism becomes a recurring consequence.

Growth Mindset Theory

Growth mindset theory was developed by Carol S. Dweck (2006) and originated from educational psychology which emphasizes that individual abilities are not something static, but can develop through effort, learning from failure, and accepting challenges as a process of self-improvement. Individuals with a growth mindset believe that personal qualities such as intelligence, attitude, and behavior can change over time if given the right motivation and opportunity.

Growth mindset is an important approach in the development of prisoners, especially recidivists, because it emphasizes internal changes as a basis for better behavior. Prisoners who have a growth mindset will be more open to the rehabilitation process, skills learning, and counseling, and tend to be more optimistic in reorganizing their lives post-release. This theory also highlights the importance of the role of guidance officers, counselors, and psychosocial support systems in encouraging prisoners to build confidence that they are able to change and live productively in the community.

Therefore, the growth mindset theory is the basis for developing a prisoner development model that is not only structural and procedural, but also touches on the psychological and motivational aspects of prisoners. This is in line with the research objectives to examine how the coaching pattern provided at the Class IIA Curup Correctional Institution can form a new positive mindset and prevent recidivism.

Framework of Thinking

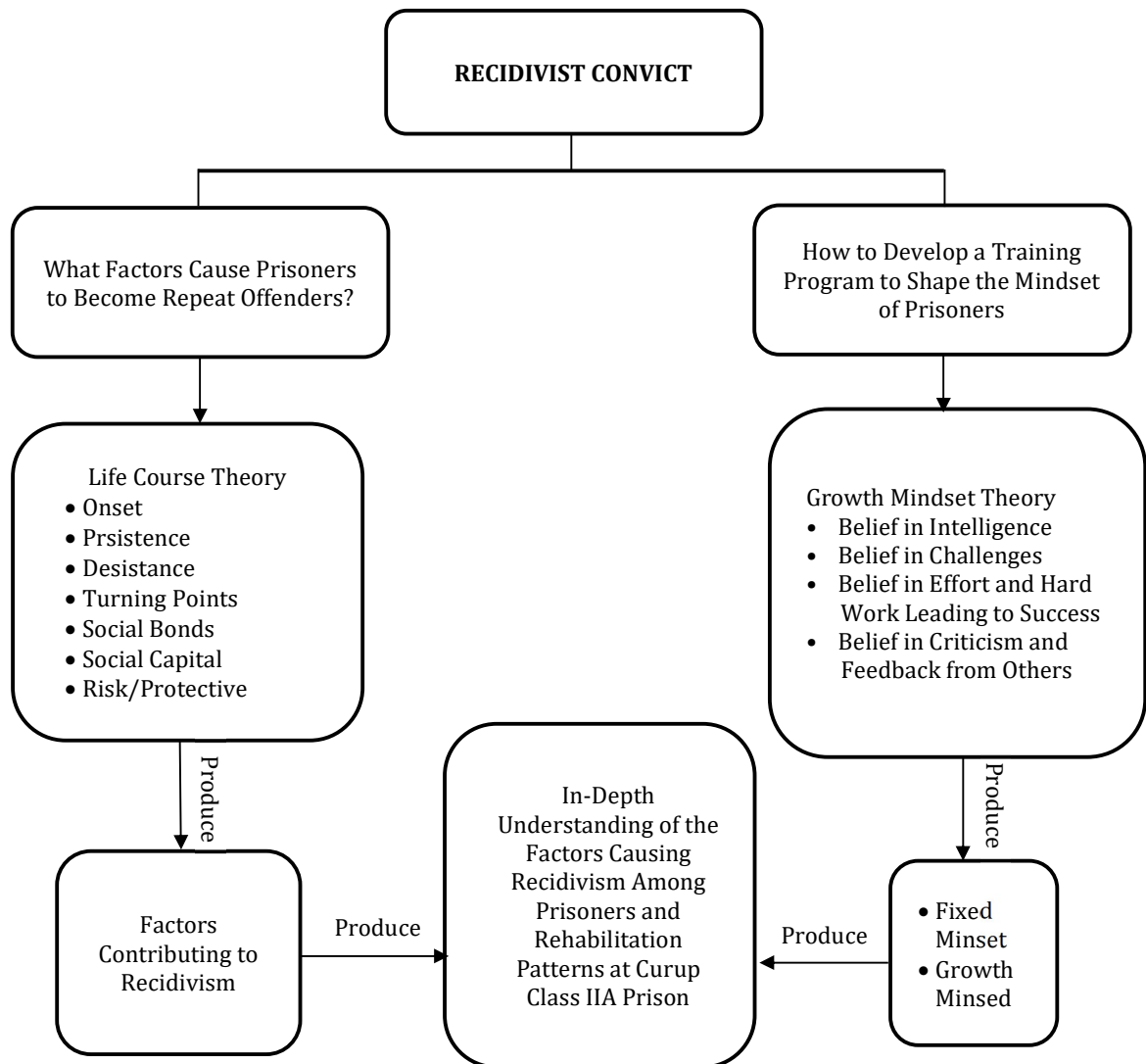


Figure 1
Framework of Thinking

The study of the research raised begins with the existence of recidivist prisoners in the Curup class IIA correctional institution. The problem is the factors that cause prisoners to become recidivists. This is examined from the factors that influence the recidivist inmates by using life course theory. Then this theory has seven aspects or patterns that can explain the basic causes of prisoners becoming recidivists.

This research not only highlights the factors that cause a person to re-offend, but also provides an overview of the extent of the coaching program at Class IIA Curup Correctional Facility. Using 4 aspects of the Growth Mindset theory will provide an overview of the mindset of prisoners who have undergone a coaching program. By using interview, observation, and documentation methods in the process of using growth mindset theory.

After that the results of the method will find out the picture of the inmate having a fixed mindset (Fixed development pattern) where the inmate will continue to commit crimes with a fixed mindset without any change or Growth Mindset (Mind development pattern) where the inmate has a mindset that will not commit crimes again and can return to society to be better than before.

METHOD

This research uses a descriptive qualitative approach with the aim of describing in depth the factors that cause recidivism in the Class IIA Curup Correctional Institution. This approach allows researchers to explore the subjective experiences of recidivist prisoners and the views of correctional officers comprehensively, so as to provide a comprehensive picture of the dynamics of coaching and social reintegration. The types of data used in this study include primary and secondary data.

Primary data was obtained through semi-structured in-depth interviews and direct observation in the prison environment. The informants consisted of six recidivist prisoners who had served more than one year and six correctional officers involved in the coaching process. The selection of informants was done purposively to ensure relevance to the research focus.

Secondary data were obtained from official documents and archives of Class IIA Curup Correctional Facility, such as demographic data of prisoners, coaching records, as well as internal reports on social reintegration programs. These documents serve to support and complement the information obtained from interviews and observations. Data analysis was carried out through the stages of data reduction, data presentation, and conclusion drawing. The researcher grouped information based on themes that emerged from the interview transcripts using NVivo 12 software. This technique allows the identification of common patterns and differences in experience between informants, resulting in conclusions that can answer research objectives systematically and validly.

RESULTS AND DISCUSSION

Internal and External Factors Causing Recidivism

From the analysis of interview data, there are a number of internal factors that consistently appear in recidivist prisoners. The first is weak self-control, especially in resisting the urge to return to deviant behavior when facing life pressures. Some prisoners stated that although in prison they had the intention to change, when they returned to the community, the absence of moral support and economic pressure made them tempted to return to the old environment.

The second factor is the desire to prove one's existence through wrong means. Crimes are committed not only out of necessity, but as a form of compensation for the social rejection they experience. In social control theory, individuals who lose attachment to legitimate social norms tend to seek recognition through deviant channels. Third, low legal awareness and a lack of self-reflection on past mistakes also influence the tendency to reoffend. Some recidivist prisoners even feel that "prison is a normal place" for them, which indicates the formation of a criminal subculture mentality due to repeated recidivism.

The most significant external factors driving recidivism are limited economic access and social inequality. Prisoners who have been released often do not have permanent jobs and have difficulty earning a decent income. The stigma of being an ex-convict prevents them from obtaining formal employment, even for informal work. One informant claimed to have been refused work in several places due to his status as an ex-

convict, which eventually forced him to return to the old world, namely the drug trafficking network. Another important factor is the absence of an effective social reintegration system. After being released from prison, there are no institutions or programs that actually assist them in the process of adapting back to society. Even the family environment sometimes no longer provides emotional and moral support. In some cases, prisoners claim to be shunned by their families because they are considered "shameful". This is in line with the concept of social stigma according to Goffman (1963), where negative social labels attached to individuals make it difficult for them to re-establish a healthy social identity.

Patterns of Prisoner Development in Class IIA Curup Correctional Facility

Coaching at Class IIA Curup Correctional Facility is divided into two main categories, namely personality coaching and independence coaching. Personality development focuses on moral and spiritual aspects, such as religious guidance, lecture activities, and group guidance.

This coaching aims to instill positive values and encourage the process of self-reflection of prisoners. Meanwhile, self-reliance coaching includes job training such as carpentry, agriculture, and screen printing, which aims to equip prisoners with skills that can be used to earn a living after release. However, in its implementation, this coaching has not been fully optimized.

The obstacles faced include the limited number of coaches, lack of practical materials, lack of work tools, and limited cooperation with outside parties to channel inmates' skills after release. Informants from the officers stated that most of the training only takes place as a formality, and has not touched the substance of behavior change or readiness for independent living in depth.

Prisoners' Response to the Guidance Program

Prisoners' responses to the coaching program they undergo are quite diverse. Some prisoners feel that the coaching they receive is very useful, especially religious coaching which helps them understand their past mistakes and provides encouragement to change.

However, others consider that coaching only serves as a routine without any real change. Guidance activities are considered not to equip them sufficiently to deal with the pressures of life outside, especially those related to the economy and social acceptance. Some prisoners also stated that coaching for independence is less relevant because the skills provided do not match the needs of the job market they face after release. For example, training in screen printing or carpentry is considered ineffective if there is no access to equipment or business capital after they leave prison.

Role of Correctional Officers

The role of officers in the coaching process is very important, both as mentors, supervisors, and motivators for prisoners. Correctional officers interviewed by said that they try to take a personal approach to prisoners, especially recidivists, to understand the root causes of deviant behavior.

However, they also acknowledged limitations in the implementation of this function, mainly due to high workloads, unbalanced officer-prisoner ratios, and limited training for the officers themselves. Correctional officers should ideally not only carry out administrative or security roles, but also be agents of behavior change. In reality, many officers have not received in-depth psychosocial training to support recidivist prisoners

who have psychological disorders or distress. This is a challenge in creating a comprehensive coaching system.

Criminological and Psychological Analysis of Recidivism

Criminologically, the phenomenon of recidivism in Class IIA Curup Correctional Facility can be explained by the social control theory approach (Hirschi, 1969), which states that individuals commit crimes when their social ties to society weaken. Weak attachments to family, community, and formal institutions become the impetus to deviate again.

Meanwhile, strain theory (Merton, 1938) is also relevant to use, namely that individuals commit crimes because of the gap between the expected goals and the means available to achieve them. From a behavioral psychology perspective, recidivism can be viewed as the result of repeated patterns of negative reinforcement. If previous criminal behavior "produces" positive outcomes (e.g. material or recognition), and there is no effective new learning during coaching, then prisoners are likely to repeat the behavior. Therefore, coaching interventions should not only touch on moral aspects, but also strengthen stress coping skills, increase self-efficacy, and form a positive mindset.

CONCLUSIONS AND SUGGESTIONS

Based on the results of research conducted at the Class IIA Curup Correctional Institution, recidivism is influenced by complex and interrelated internal and external factors. Internal factors include weak self-control, dependence on the old environment, and low legal awareness. While external factors include economic pressure, social stigma, lack of post-release support, and limited access to employment. Through the Life Course Theory approach, it was found that the absence of a strong turning point in the lives of recidivist prisoners increases the likelihood of them re-offending after release. Class IIA Curup Correctional Facility has implemented a personality and independence development program aimed at shaping changes in the mindset and behavior of prisoners.

However, limited resources, overcapacity, and lack of structural support cause the implementation of coaching to not run optimally. Efforts to instill a growth mindset are still sporadic and not yet integrated systemically, although there are some prisoners who show awareness and motivation to change independently. To reduce the recidivism rate and increase the success of social reintegration, a more comprehensive and sustainable reform of the coaching system is needed. Prisons need to strengthen the capacity of facilities and coaches, as well as develop a coaching curriculum based on market needs and psychosocial principles.

On the other hand, cooperation with the community and outside institutions is very important in building a bridge of reintegration for post-release prisoners, so that they have a better chance of life without returning to the path of crime.

REFERENCES

- Arrahmania, M., Asis, A., & Muin, A. M. (2021). The Effectiveness of Law Number 12 of 1995 concerning Corrections Regarding the Rights of Prisoners at the Palopo City Class IIA Correctional Institution. *Al-Qadau Journal: Islamic Justice and Family Law*, 8(2), 1-18. <https://doi.org/10.24252/al-qadau.v8i2.19541>
- Aryudha, M. (2019). Factors in the Occurrence of Criminal Recidivism (Study at Class 1 Correctional Institution Malang). *Brawijaya Law Student Journal*, 112(98), 24-48.
- Baffour, & Darkwa, F. (2020). Factors contributing to recidivism among inmates in selected Ghana prisons. In James cook University.
- Carol S. D. (2006), *Mindset: The New Psychology of Success*

- Creswell, J. and Creswell, D. (2023). Research Design, Qualitative, Quantitative and Mixed Methods Approaches. In SAGE Publications, Inc: Vol. Sixth Edit (Issue 1)
- Creswell, J. W. (2018). Research Design qualitative, quantitative, and mixed methods approaches fifth edition. In SAGE Publications, Inc.
- Directorate General of Corrections. (2023). Correctional Performance Report 2023. 1-367.
- Glueck & Glueck (1950). Unraveling Juvenile Delinquency.
- Firman, A. P., Muhamad, A., & Anwar, H. (2023). The Effectiveness of the Correctional Institution's Role in Prisoner Development Efforts in Review of Law No. 22 of 2022 concerning Corrections. *Collegium Studiosum Journal*, 6(1), 58-68.
- Green, K. C. (2024). Recidivism: Putting a Stop to the Revolving Door. In
- Irawan, R. (2018). Self-Concept of Correctional Institution Residents. *SCHOULID: Indonesian Journal of School Counseling*, 3(2), 41.
- Karelina, Y., & Susila, M. E. (2021). Criminological Factors of Theft Recidivist Prisoners at the Tasikmalaya City Class II B Correctional Institution. *Indonesian Journal of Criminal Law and Criminology (IJCLC)*, 2(2), 115-125.
- La Patuju, & Sakticakra, S. A. (2016). Recidivism in the Perspective of Legal Sociology. *National Journal of Law Volkgeist Mimbar Hukum*, 1(1), 104-114.
- Laub & Sampson (2003). Shared Beginnings, Divergent Lives: Delinquent Boys to Age 70.
- Mahmuda, M., & Fitriani, W. (2024). Factors Causing the Recurrence of Post-Coaching Crimes in Solok Class II B Correctional Institution and its Implications for Guidance Counseling. *Counselia; Journal of Islamic Education Guidance Counseling*, 5(1), 50-59.
- Maruna, S. (2001). Making good: How ex-convicts reform and rebuild their lives. *Making Good: How Ex-Convicts Reform and Rebuild Their Lives*.
- Marx, U. K. (1893). Division of Labor An Overview of the book by Emile Durkheim.
- Nainggolan, I. (2019). Correctional Institutions in Running Rehabilitation for Narcotics Prisoners. *EduTech: Journal of Education and Social Sciences*, 5(2), 136-149.
- Nitriani, N., Landrawan, I. W., & ... (2023). Analysis of Factors Causing Recidivism of Narcotics Users in Singaraja Class Iib Correctional Institution Viewed from the Aspects of *Journal of Gender and Human Rights*, 1(1), 182-190.
- Rinaldi, K. (2021). Guidance and Supervision in Correctional Institutions. In P. T. Cahyono (Ed.), *Yayasan Cendikia Mulia Mandiri Editorial* (Vol. 21, Issue 1).
- Samosir, D. (1992). The Function Of Imprisonment In Indonesian Criminal System (Pp. 1-5). Sampson & Laub (1993). *Crime In The Making: Pathways And Turning Points Through Life*.
- Sampson, R. J., & Laub, J. H. (1993). *Crime In The Making: Pathways And Turning Points Through Life*. *Canadian Journal Of Sociology / Cahiers Canadiens De Sociologie*, 19(3), 430.
- Setianto, M. J., Landrawan, W., & Ananda, D. (2023). Implementation Of Article 38 Of Law Number 22 Of 2022 Concerning Corrections For Theft Recidivist Inmates In Class Ii B Tabanan Prison.
- Siti, R. D. (2023). No Title 0|tinjauan Yuridis On Children Residential Offenders Based On The Understanding Of The Law Number 23 Of 2002 About
- Tahqiqqa, J., Tapaktuan, K. I. I. B., & Arifa, R. N. (2024). Narcotics Abuse (A Study
- Titin, N. S. H. K. A. S. E. (2024). The Concept Of Residive In The National Criminal Code Is Reviewed In The Perspective Of The Purpose Of Punishment.
- Unizar Law Review (Nationally Accredited Journal (Sinta 5)), 7(1). Walden University.

- Wardani, S., Asbari, M., & Jannah, M. (2023). Self Theorist: The Influence of Self-Theory on Motivation, Personality, and Self-Development. *JISMA: Journal of Information Systems And Management*, 2(5), 12-17.
- Waruwu, M. (2023). Educational Research Approaches: Qualitative Research Methods, Quantitative Research Methods And Mixed Methods. 7, 2896-2910. Winarni And Susanto, Hari Purnomo And Apriyani, D. C. N. (2024). The Effect Of Growth Mindset On Students' Numeracy Literacy In Terms Of Grit. 7-21.
- Yeager, D. S., & Dweck, C. S. (2012). Mindsets That Promote Resilience: When Students Believe That Personal Characteristics Can Be Developed. *Educational Psychologist*, 47(4), 302-314.